



Ropox Swing Washbasin and Dock-in

User Manual & Mounting Instructions

Keep this folder with product at all times!

Content:

1.	INTRODUCTION	2
2.	CONFORMITY WITH EU DIRECTIVES	3
3.	APPLICATION	3
4.	TECHNICAL DATA.....	4
5.	LOAD AND LOCK	5
	5.1 Maximum loads	5
6.	INSTALLATION INTERFACES	6
	6.1 Construction	6
	NOTE:	6
	6	
	6.2 Dimensions.....	6
	6.3 Connection adapters	7
	6.4 Layout proposals	9
7.	DAILY USE	10
	7.1 Adjusting the height.....	10
	7.2 Lock Washbasin into Dock-in.....	10
	7.3 Permanent lock	11
	11	
	7.4 Deactivation of the lock.....	11
8.	MOUNTING	12
	8.1 Components.....	12
	8.2 Mounting.....	14
9.	SAFETY IN USE	22
10.	CLEANING/MAINTENANCE	23
	10.1 Cleaning of the washbasin and Dock-in.....	23
	10.2 Repair of washbasin.....	23
	10.3 Maintenance.....	23
	10.4 Service schedule, operation and maintenance	24
11.	COMPLAINTS.....	25



It is important to read this manual
before installation and usage

1. Introduction

Ropox Swing Washbasin and Dock-in is a washbasin which can be swung to the user, which makes it possible for the user to wash hands before leaving the toilet. This increases the hygiene, makes the user more self-reliant and gives the assistant better working conditions.



This document must ALWAYS accompany the product and be read by and available to users.

All users must follow these instructions. It is very important that the instructions have been read and understood prior to operation of the product.

These instructions must always be available to the user and must accompany the product in case of relocation.

Correct use, operation and inspection are decisive factors for efficient and safe performance.



The operation must be made or supervised by an experienced adult, who has read and understood the importance of section 9 "Safety in use"

2. Conformity with EU Directives

This product has CE marking and is thus in accordance with the basic requirements concerning functionality and safety according to the current Machinery Directive.

Ropox Swing Wash Basin is manufactured in accordance with the current requirements of Directive No. 93/42/EEC concerning Medical Devices and belongs to the lowest risk class 1



3. Application

Ropox Swing Washbasin and Dock-in is designed to obtain optimum working conditions for the user. The unit is not to be used as a support arm or as a chair.

This version of the Ropox Swing Washbasin and Dock-in can be easily adjusted in height to fit the needs of individual users. The high wall unit covers all the water- and drain pipes for improved hygiene and visual appeal.

The product must be used indoor, under room temperatures as stated in section 4.

4. Technical data

Product:	Ropox Swing Washbasin and Dock-in	
Item numbers:	Right:	40-40071
		
	Left:	40-40072
		
Height adjustment:	200 mm	
Material:	Cover:	Vacuum-shaped ABS
	Wash Basin:	Molded marble and polymer with sanitary gelcoat surface
	Sand cast aluminum	
	Stainless steel tube	
	Various plastic components	
Surface treatment:	Powder coating, RAL 9010 matte white, chromite, gel coat	
Ambient temperature range:	-5 °C to +40 °C Transport and storage +5 °C to +45 °C Operation	
Relative humidity:	20% to 80% - non condensing	
Max load:	Max user weight has been set to 245kg/539lbs in accordance with DS/ISO 17966, when washbasin is locked inside Dock-in..	
	Locked in Dock-in A 245kg/539lbs person is able to lean on the basin while standing, without causing any significant deformation or safety risk.	
	Washbasin free standing A 80kg/176lbs person is able to lean on the basin while standing, without causing any significant deformation or safety risk. Tested with an evenly spread load on the basin.	
Complaints:	See page 26	
Producer:	Ropox A/S DK-4700 Næstved, Tel.: +45 55 75 05 00 E-mail: info@ropox.dk – www.ropox.com	



This product has CE-marking and this ensures that Ropox Swing Washbasin & Dock-in is produced in accordance with relevant requirements of DS/ISO 17699: 2016, plus directive 93/42/EØF as regards to medical equipment which all belong in the lowest risk group 1.

Intended use

The Swing Washbasin is a washbasin which can be swung to the user, which makes it possible for the user to wash hands before leaving the toilet. This increases the hygiene, makes the user more self-reliant and gives the assistant better working conditions. The Swing washbasin is available with manual height adjustment. Depending on the model, the height adjustment range is 15 cm for models without dock-in and 20 cm for models with dock-in. This means that the user and carer can set the level of the sink to the height that fits the user's needs. The height adjustment also makes the sink suited for both standing and seated use. It can be lowered for seated users, e.g., wheelchair users or elderly users who prefer to sit while washing hands or brushing teeth, and it can be raised for standing users or carers.

5. Load and lock



Ropox Swing Washbasin has a turning function, which means that it is **NOT** allowed to be used as a walking or standing support.



If the washbasin is locked in the Dock-in it functions as a standard washbasin and is safe to use as a standing support.

5.1 Maximum loads

Locked in Dock-in (sold separately)

A 245kg/539lbs person is able to lean on the basin while standing, without causing any significant deformation or safety risk.

Washbasin free standing

A 80kg/176lbs person is able to lean on the basin while standing without causing any significant deformation or safety risk.



Do not sit or fully displace your body weight on the sink or on the swing arm.

6. Installation interfaces

6.1 Construction

The wall must be made of a material suited for screw mounting and approved for damp rooms. The hatched area is the minimum area for reinforcement of the wall. Reinforcement from floor to ceiling is advisable.

According to DS/ISO 17966:2016, the maximum user weight has been fixed at 245kg (539 lbs) when the washbasin is in the Dock-in and 80kg (176 lbs) when washbasin is out of the Dock-in.

Max. tensile load of upper screws

120kg/screw (264lbs/screw)

The washbasin is supplied with a set of 10 screws and rawlplugs suitable for mounting on a concrete wall. The fitter should always consider the material, condition and strength of the wall and use screws and rawlplugs suitable for the specific wall type.

Plumbing

The drain hose is a flexible Ø32 (1 ¼") hose.

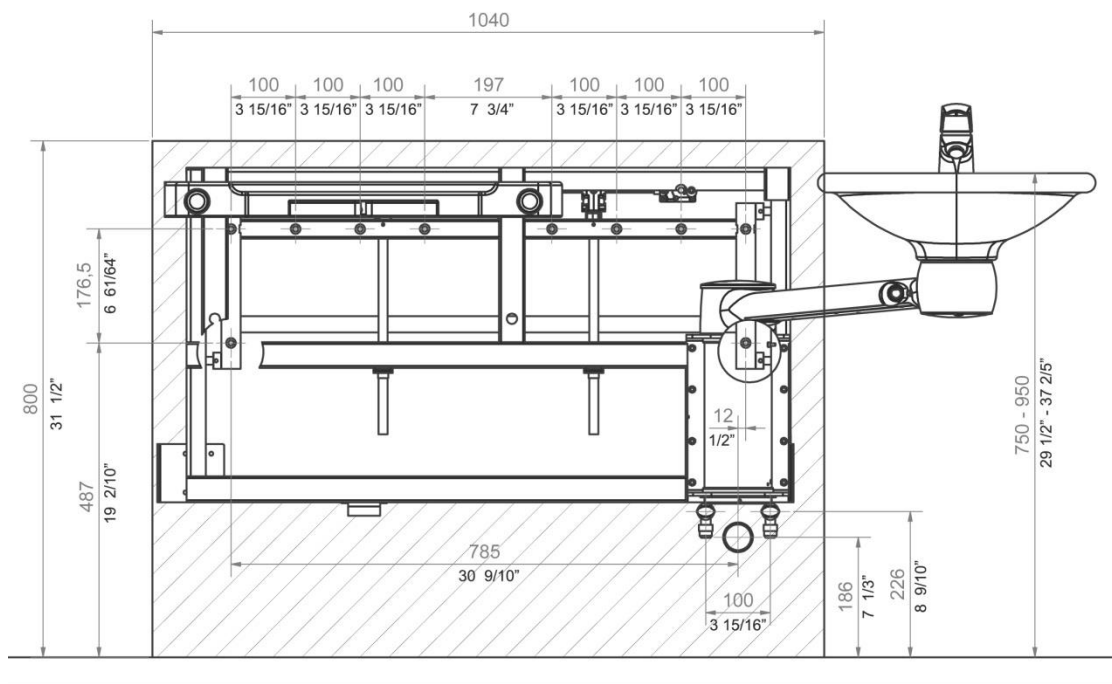
The water supply ends in 2 (two) 90° shut-off valves with ½" or 3/8" outside thread pointing downward (not included).

The flexible water connection hoses from the washbasin end in Ø10 pipes. Adapter fittings from these pipes to the shut-off valves are available from Ropox and as standard plumbing components. If a higher location of the drain than the recommended positioning is required, there may be a risk of reduced draining from the washbasin.

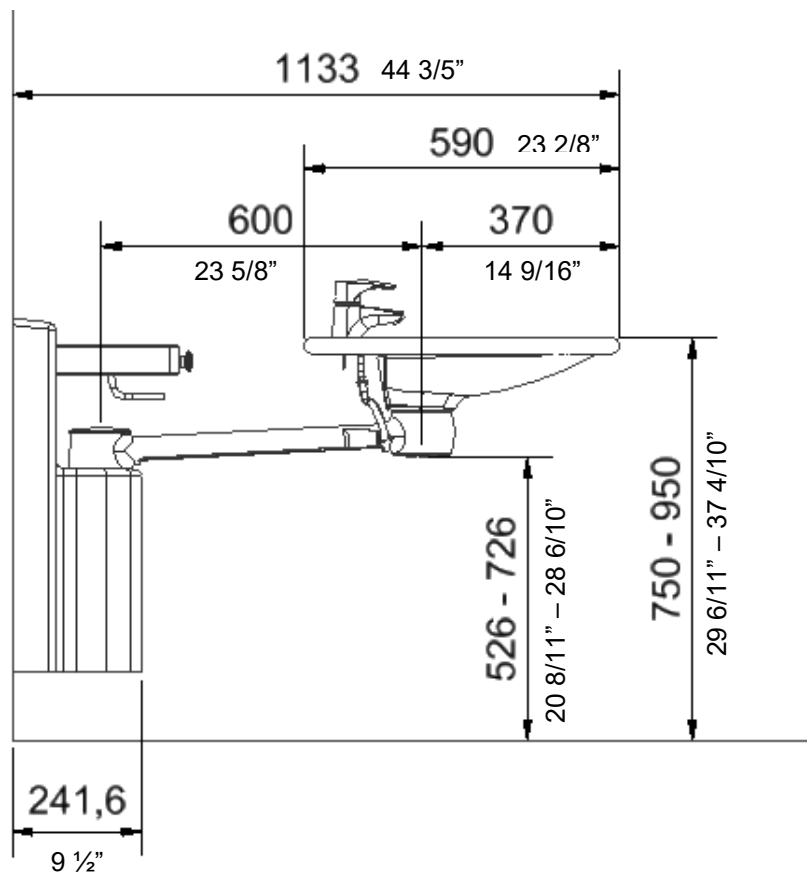
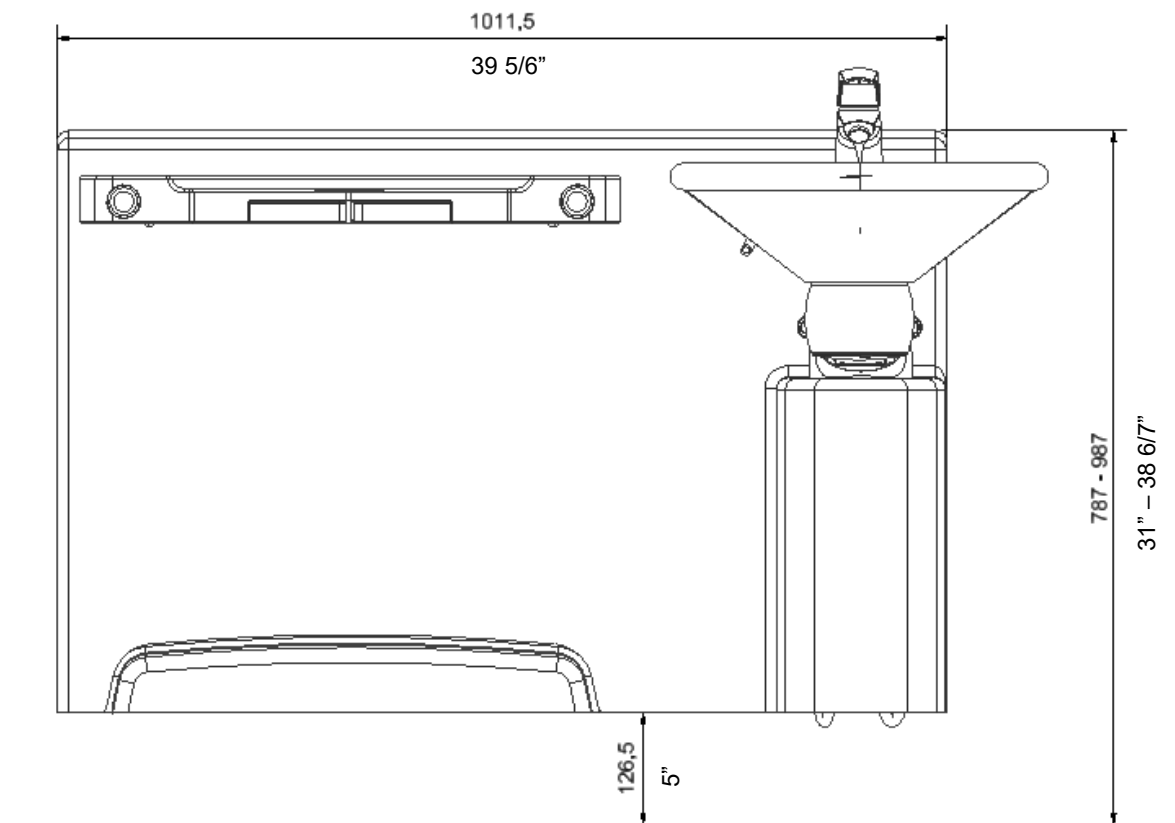
For purchase of adapters for connection to various standard installations, see "Connection Adapters – Swing Washbasin".

NOTE:

All dimensions are based on adjustment of the washbasin from 750 - 950 mm (29 ½" – 37 2/5") above floor level. If a change of this height-adjustment range is required, the recommended dimensions must be changed accordingly.




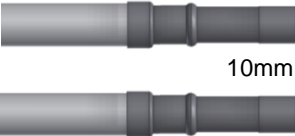






6.2 Dimensions




6.3 Connection adapters

The highlighted components can be bought separately depending on the type of building installation requirements







Water supply

Swing Washbasin	Hose from basin	Adapters	Installation in room (not included)
	 10mm	 10mm -> 1/2" Item no. 97001667	 1/2" Thread
		 10mm -> 3/8" Item no. 97001668	 3/8" Thread
		 10mm -> 15mm Item no. 97001665	 15mm Pipe


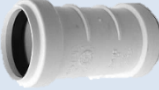

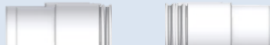
Water hose extensions

Hose from basin	Coupling piece	Extra hose
 10mm	 10mm -> 1/2" Item no. 97001101	 1/2" x 1/2", 0,5m, steel Item no. 97001123
		 1/2" x 1/2", 1m, plastic Item no. 97001120

Drain

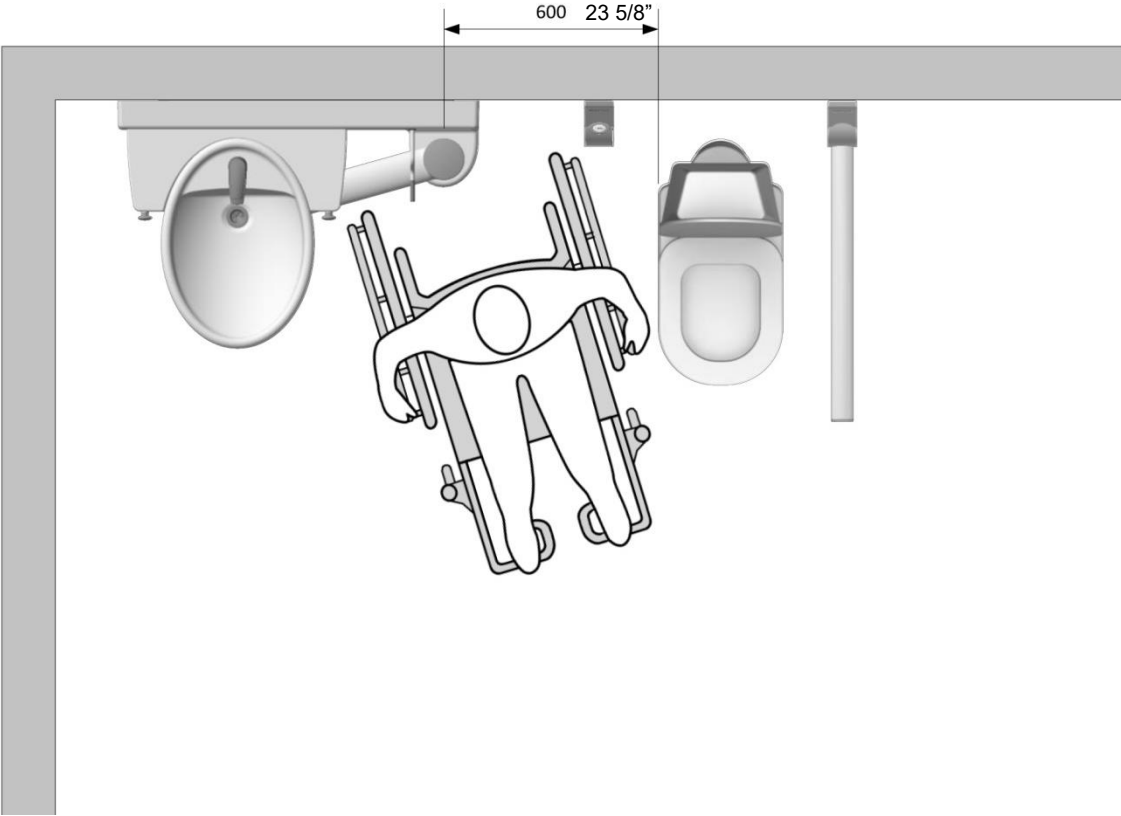
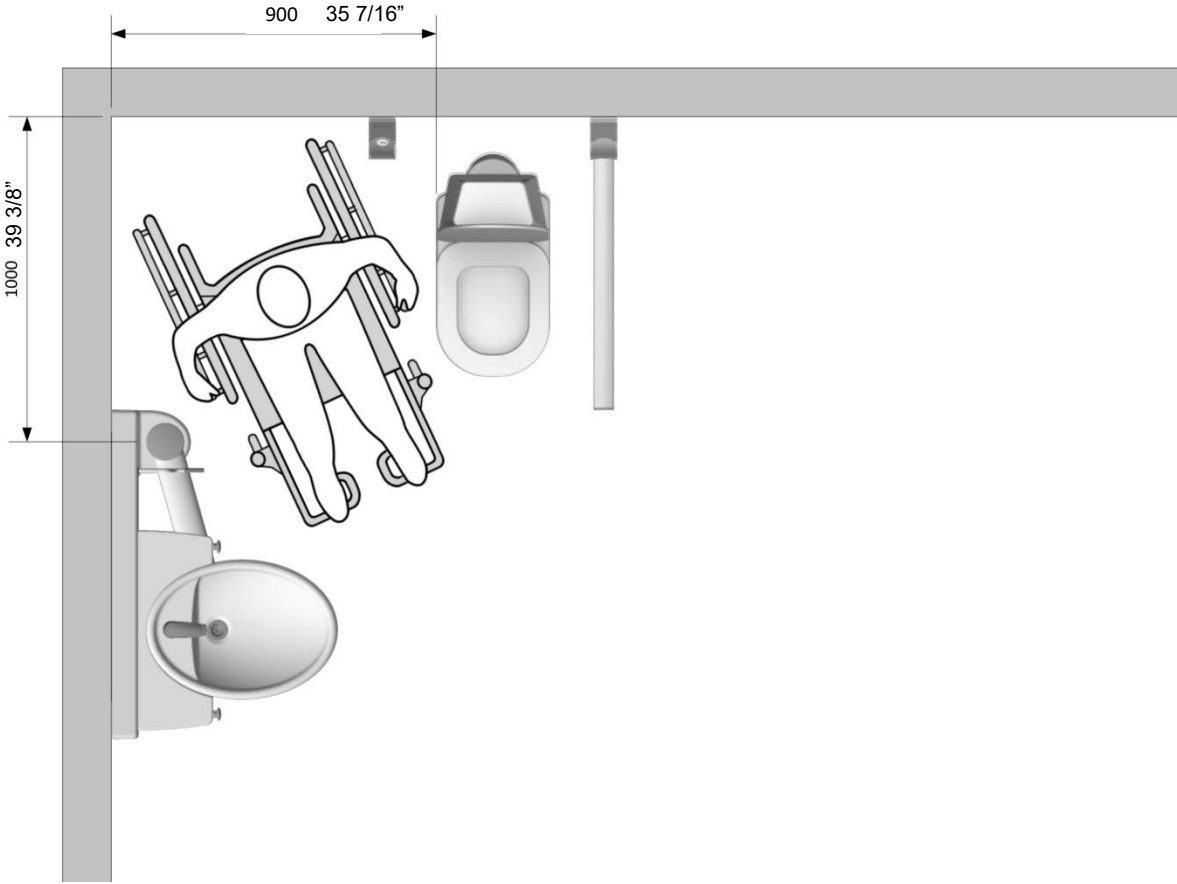
Swing Washbasin	Drain pipe from basin	Adapters	Installation in room (not included)
	 Ø32	No adapter necessary	Ø32
		 Ø32 -> Ø40 Item no. 97001660	 Ø40
		 Ø32 -> Ø50 Item no. 97001661	 Ø50

Drain pipe extensions

Drain pipe from basin	Coupling piece	Extra drain pipe
 Ø32	 Ø32-Ø32 Item no. 97001062	 Ø32 Flex hose, 27-62cm Item no. 97001162
		 Ø32 Flex hose, 40-110cm Item no. 97001161

6.4 Layout proposals

For complete layout proposals & inspiration contact Ropox for further guidance.



7. Daily use

7.1 Adjusting the height

For height adjustment turn handle.



7.2 Lock Washbasin into Dock-in

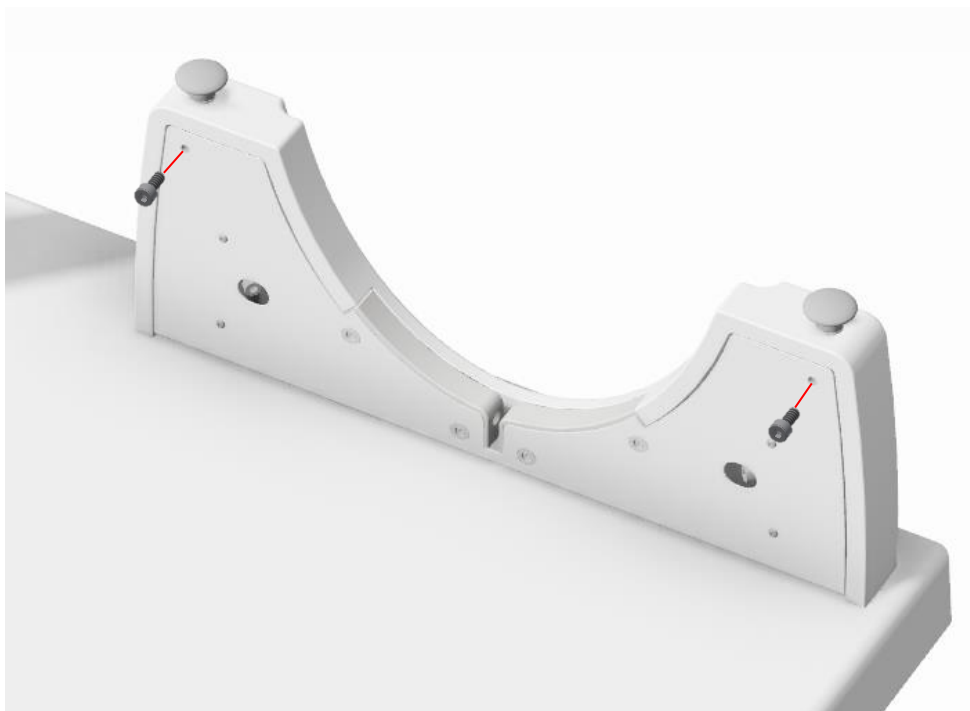
The Dock-in station is designed to ensure easy locking of the washbasin during daily use.

The washbasin is guided into the notch and will be locked automatically in the right position. To release the washbasin pull one of the two handles. This will release the washbasin from the locking mechanism after which it may swing freely.



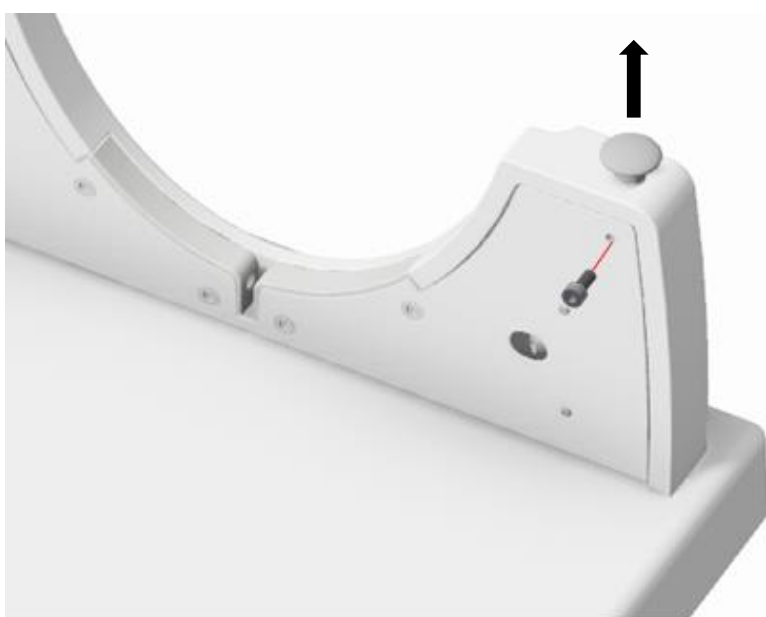
7.3 Permanent lock

The washbasin can be permanently locked and thereby function as a standard washbasin. This is done by inserting the two supplied M5 screws as shown below. Please note that the washbasin needs to be locked in the Dock-in when the screws are tightened and both screws must be used.



7.4 Deactivation of the lock

It is also possible to use the screws to deactivate the locking system if desired. This is done by inserting and tightening one of the screws while pulling out the handle. This only has to be done in one of the side to work.



8. Mounting

The screws and rawlplugs included are for mounting on a concrete wall. The installer must always examine the material, condition and strength of the wall and use appropriate screws and rawlplugs. Maximum load of top screws are 120kg.

8.1 Components

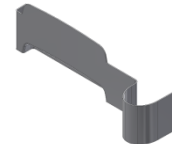
Lifting unit

1 pc.



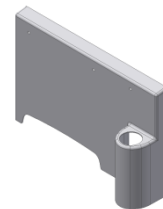
Inside cover plate

1 pc.



Outer cover plate

1 pc.



Fitting for fixation of Inside cover plate

2 pcs.



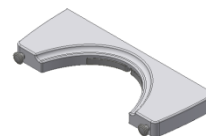
Washbasin

1 pc.



Dock-in

1 pc.



Fitting for fixation of Dock-in






2 pcs.



U-profile with nut

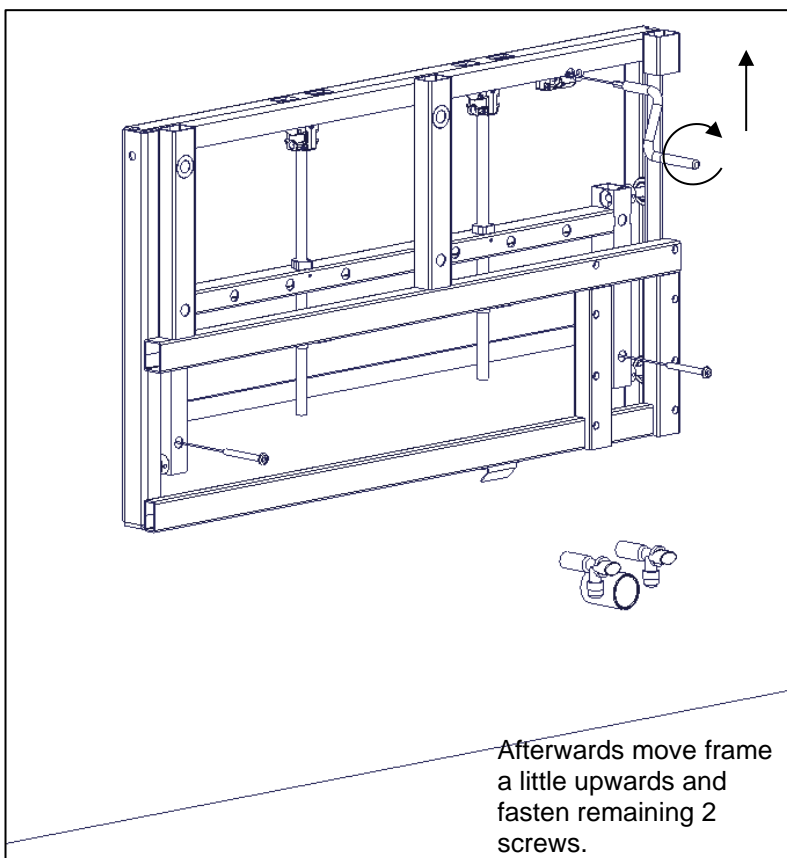
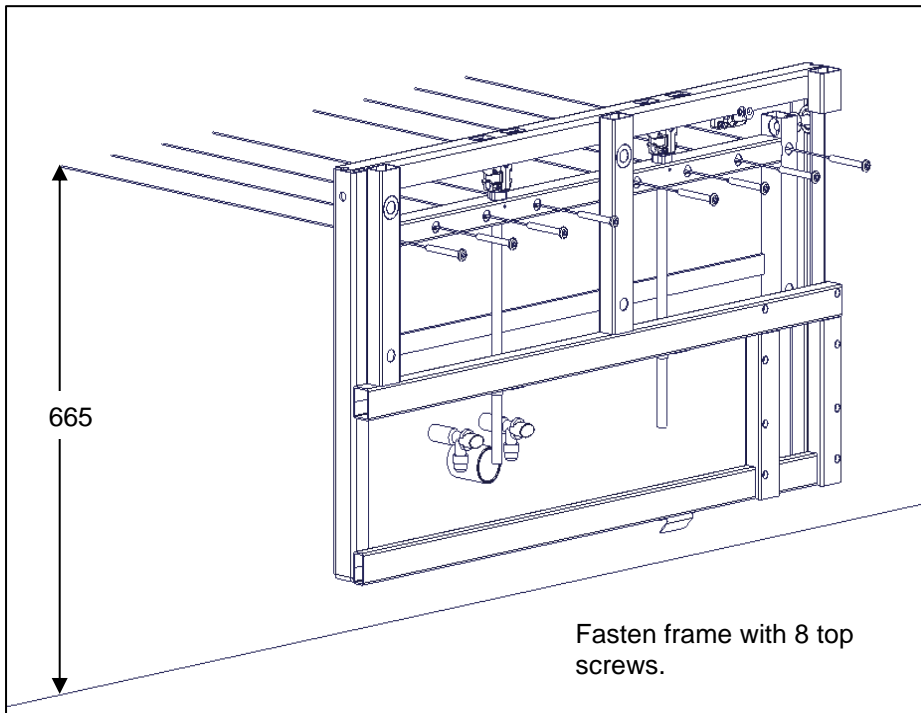
2 pcs.

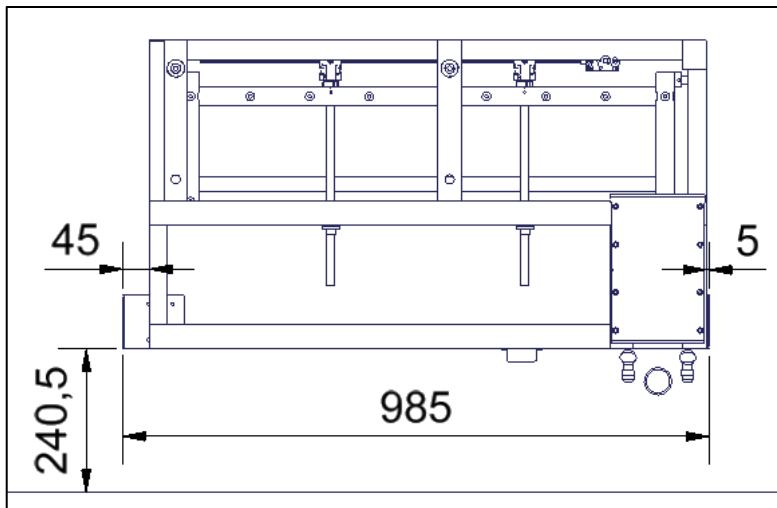
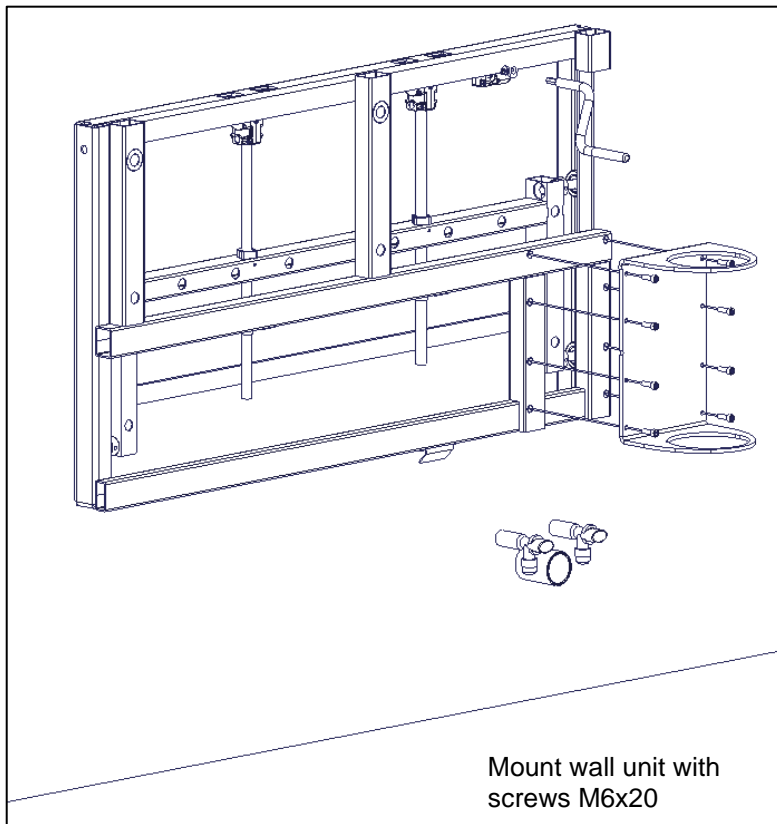


Handle	1 pc.	
Screws countersunk M6x16	8 pcs.	
Screws 4x6	2 pcs.	
Frame screws 7,5x72mm	10 pcs.	
Rawlplugs 10x61mm	10 pcs.	

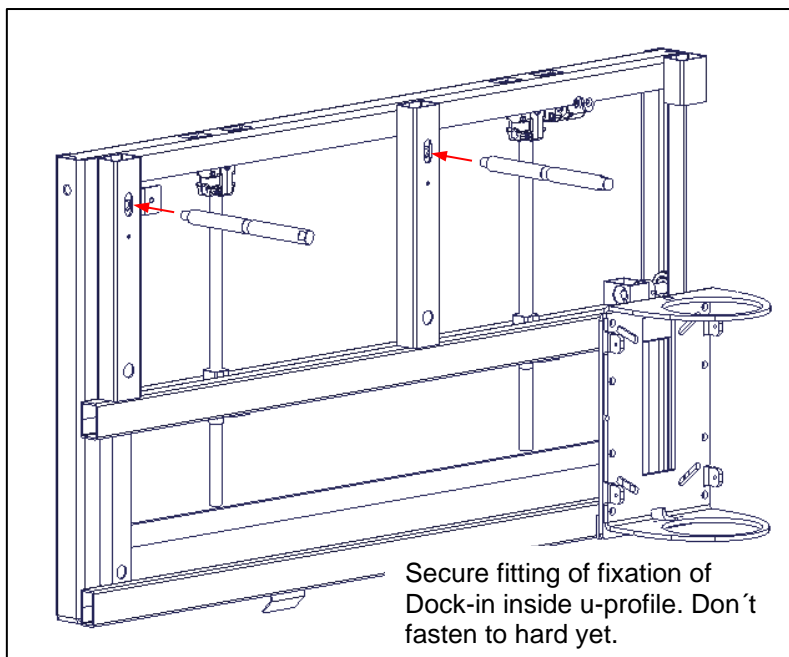
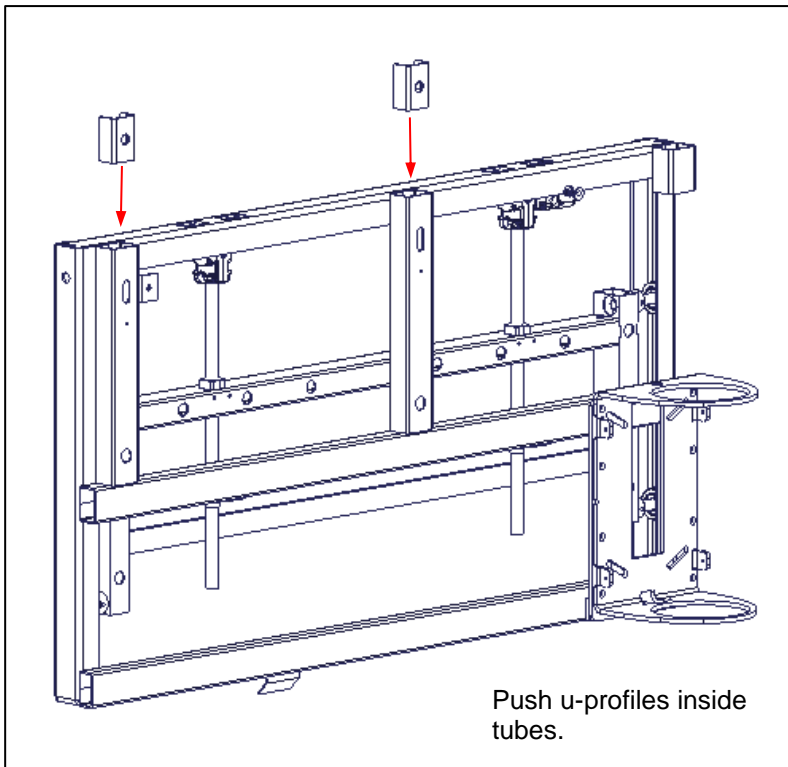
8.2 Mounting

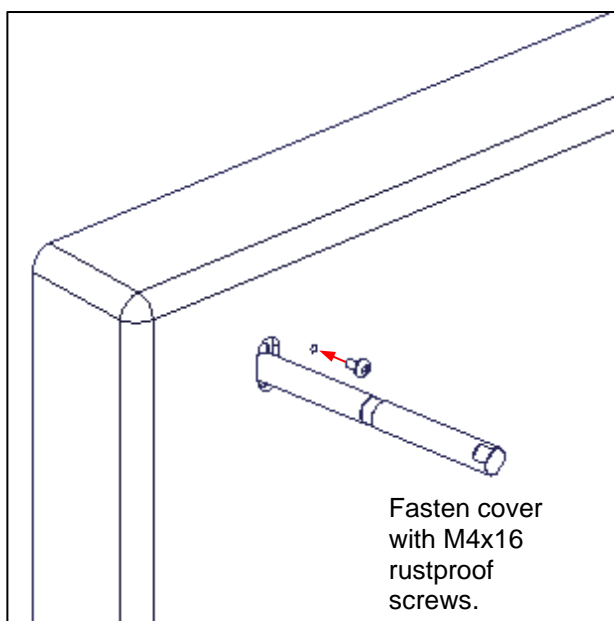
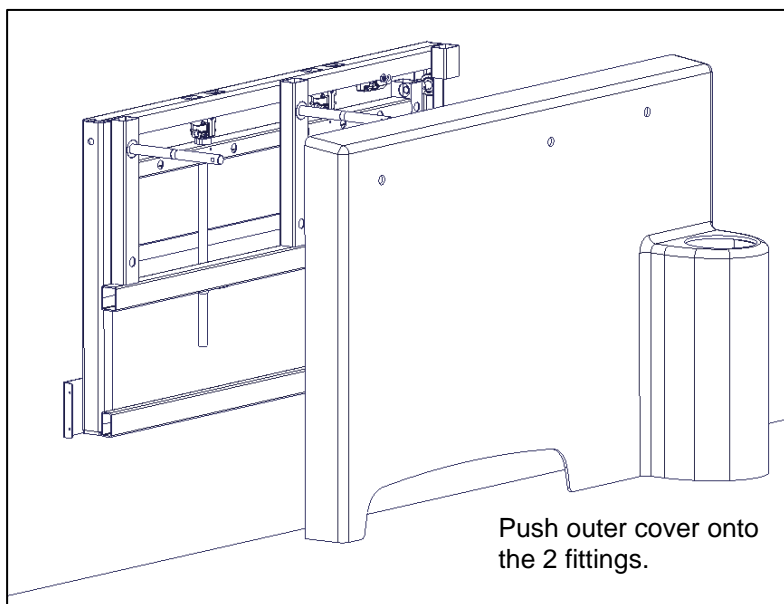
For recommended height of washbasin from 750-950mm above floor level see below mentioned dimensions.

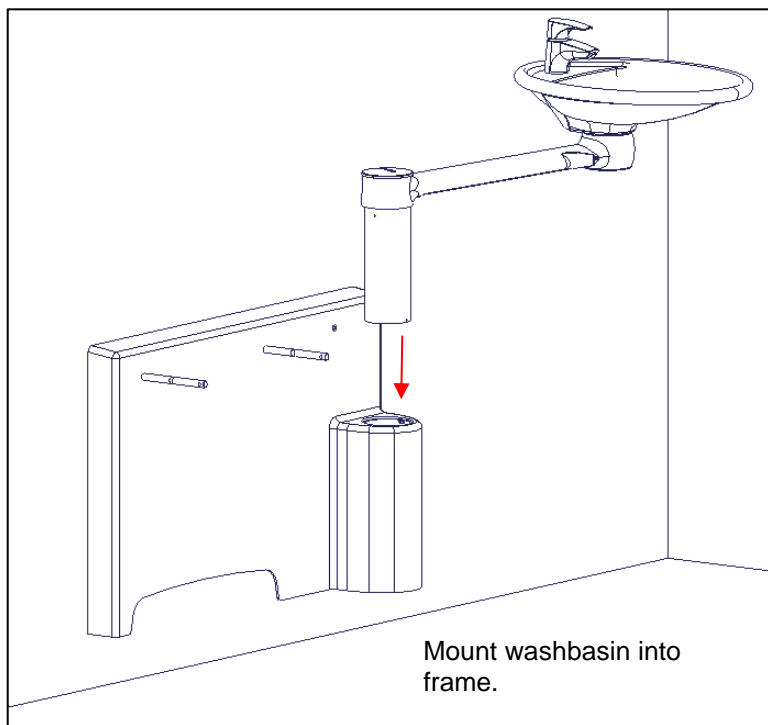




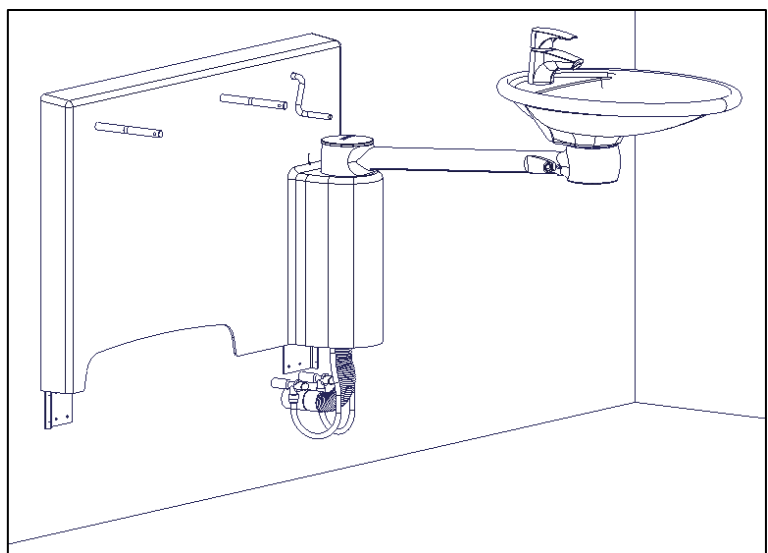
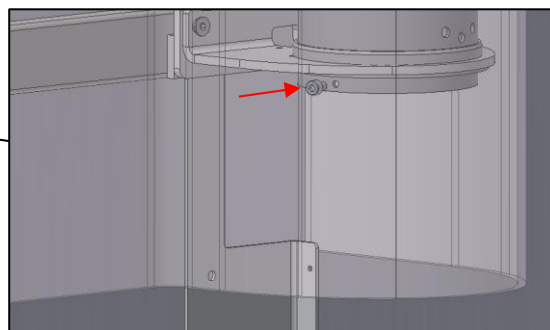
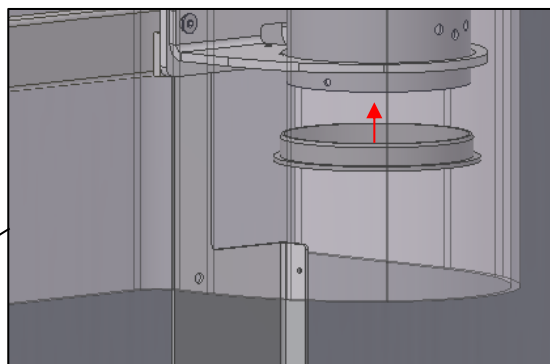
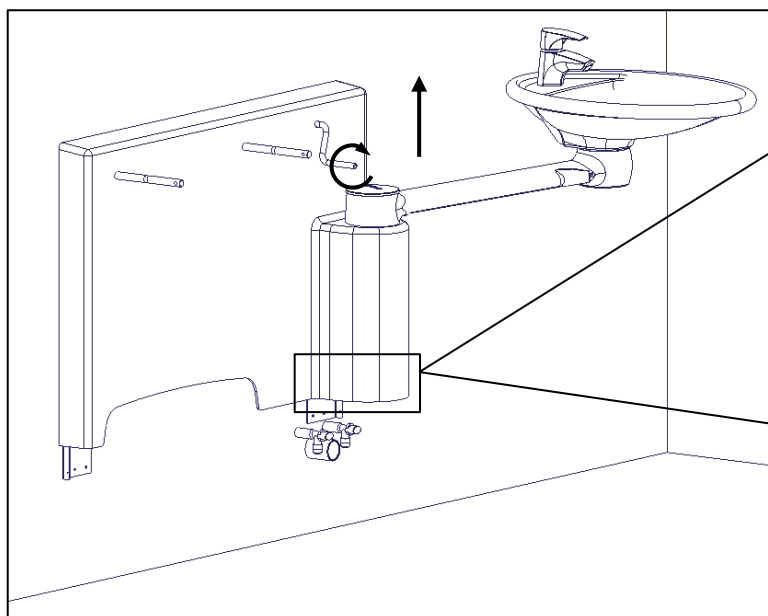
Mount fitting for fixation of inside cover as illustrated.
If washbasin is placed in opposite side fittings & dimension have to be swapped.







Move washbasin into top position. Mount 2 M5x6 screws under the cover each side. This is to avoid washbasin being pulled out.
NOTE! It is important that slide valves are mounted from beneath.



Connect drain pipe & connecting hoses.

Ø10



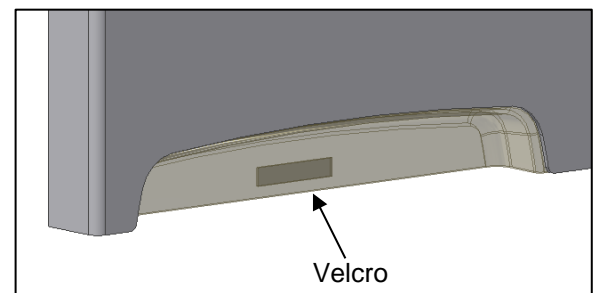
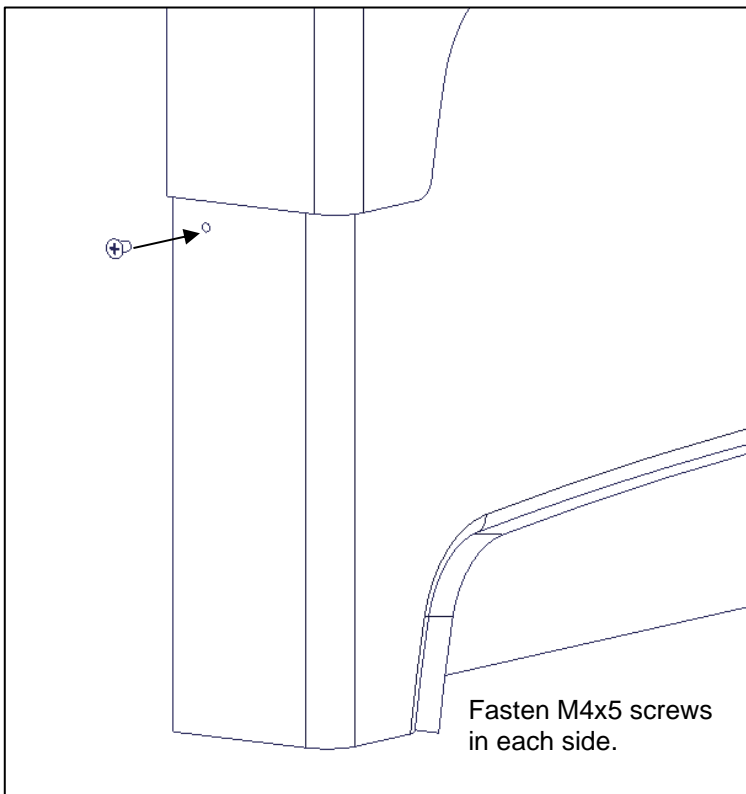
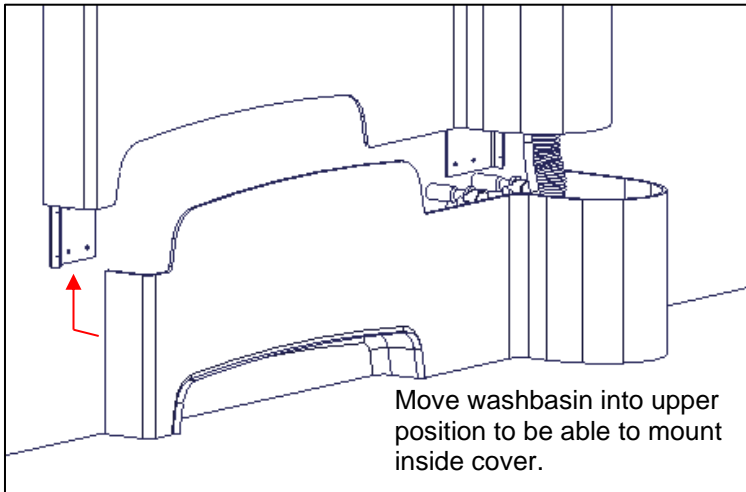
Ø32



Ø10



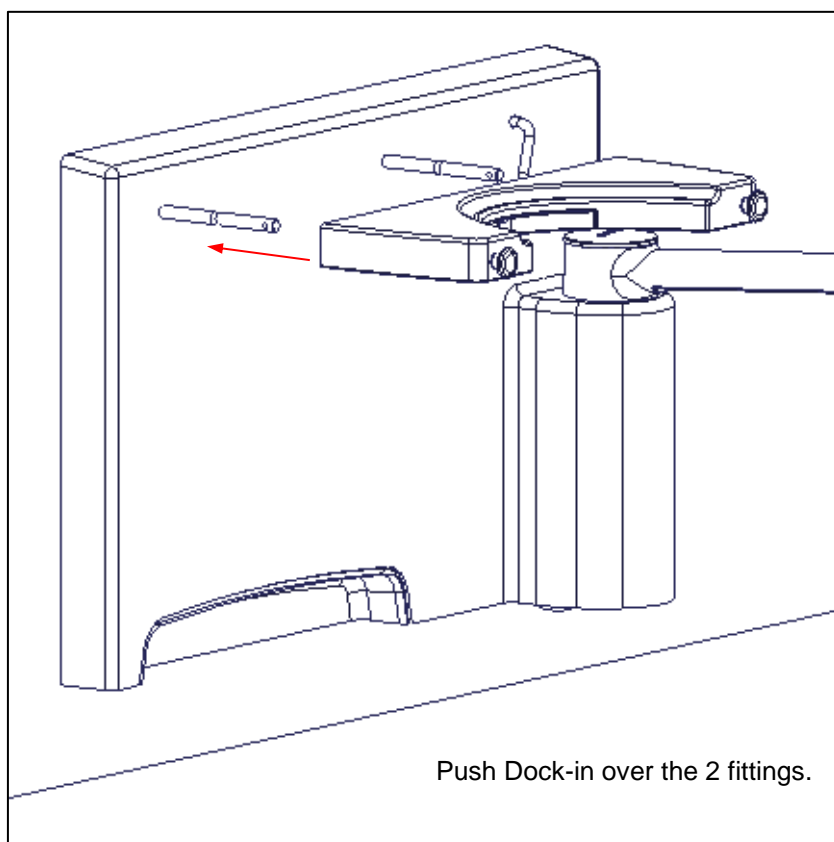
OX 2017

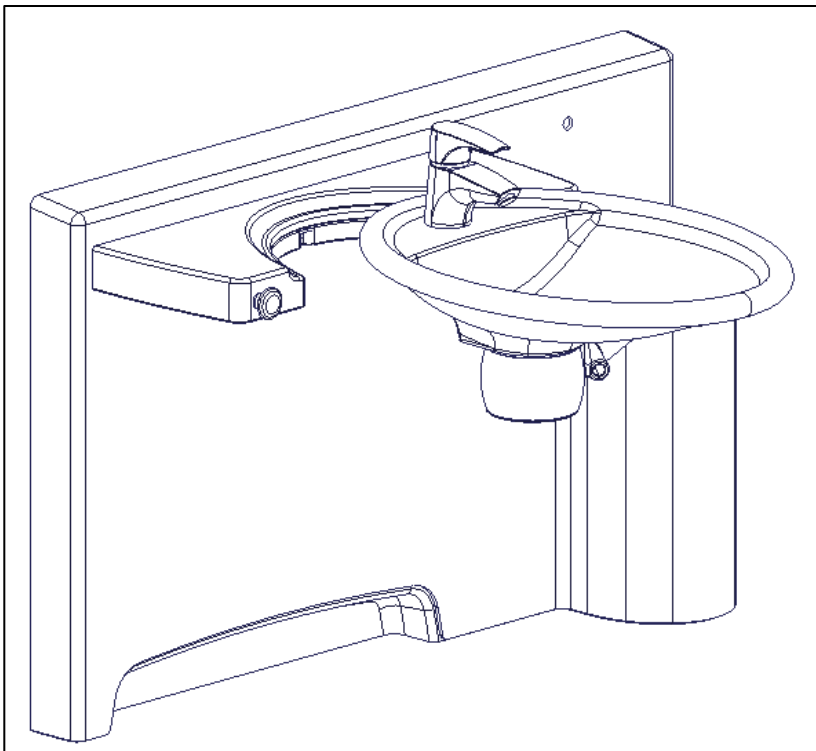
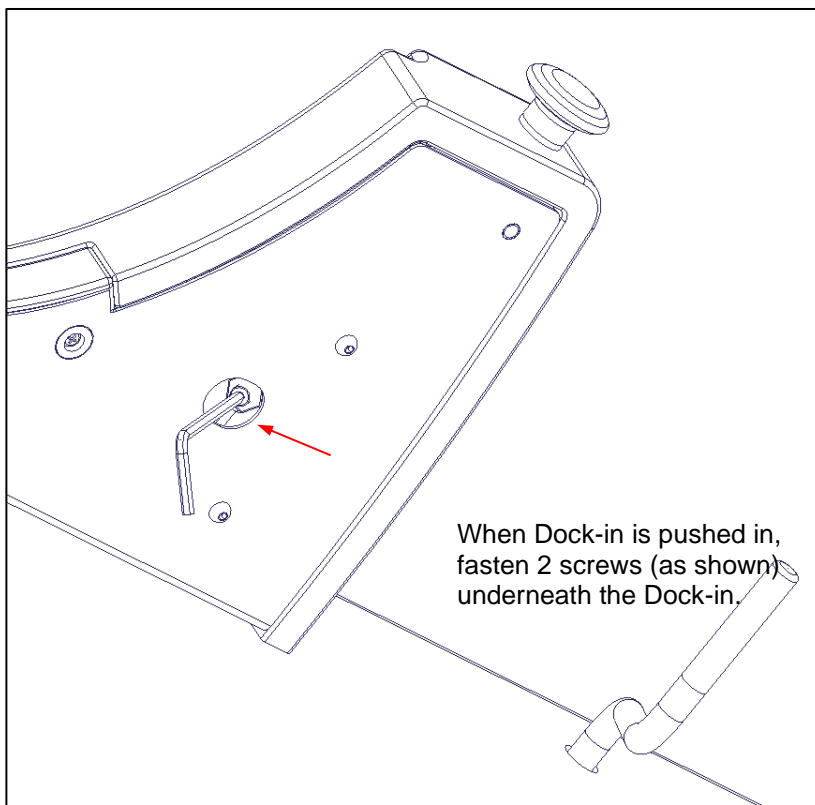


There is a small piece velcro attached to backside of inside cover. After mounting of screws, move washbasin into bottom position. Remove protection paper from velcro, hold inside cover up and position close to outer cover and push against the wall until velcro sticks to wall.



Turn washbasin in against the cover. Place if possible a spirit level onto washbasin. For fitting of fixation of Dock-in to be fastened in correct height loosen fittings a little & adjust them to leave approx. 33mm between fittings & spirit level. Afterwards fasten fittings thoroughly with a spanner.





Test that washbasin freely can be swung into Dock-in and locks like it should. If washbasin is not positioned satisfactory fittings of Dock-in have to be loosened & either raised or lowered a little.

NOTE

If the washbasin is delivered with a hands free mixer tab, this might need to be calibrated to accommodate the specific light settings in the room as well as any individual user needs. The calibration has to be done according to the user manual of the mixer tab which is supplied with the washbasin.

9. Safety in use

- The Ropox Swing Washbasin and Dock-in should only be used by people, who have read and understood these instructions.
- Always use the washbasin so there is no risk of damage to people or property. The person, who operates the Ropox Swing Washbasin, is responsible for avoiding damage or injury.
- Children or persons with reduced observation capability should only use the washbasin when supervised.
- If the washbasin is used in publicly accessible locations where children or people with reduced observation ability may get close to the Ropox Swing Washbasin, the person operating the washbasin must pay sufficient attention in order to prevent dangerous situations.
- Do not operate the washbasin in case of defects or damage.
- Do not overload the washbasin.
- Modifications, which may influence the operation or construction of the washbasin, are not allowed.
- Installation, service and repairs must be carried out by competent personnel.
- If the washbasin has not been assembled according to these mounting instructions the right to complain may become void.
- Only use Ropox original spare parts as replacement parts. If other spare parts are used, the right to complain may become void.
- Be aware not to swing the washbasin into the wall at great force it might damage the wash basin or wall.
- Keep notice that there is no overflow build into the washbasin. Only use Ropox' overflow plug to fill the washbasin. Overflow of water can cause slippery floor and should be avoided to minimize the risk of slipping or falling
- To avoid risk of pinching be aware not to place your hand between the washbasin and dock-in when locked in position.
- Be aware to check that the washbasin is properly locked in place in the dock-in before applying any loads
- The washbasin may only be applied to personal hygiene purposes.
- Do not lean on the accessories attached to the washbasin.
- To avoid entrapment do not place you head or body parts between the water connection hose and the swinging arm.
- Be aware that the washbasin might be slippery if covered in water and soap.

10. Cleaning/Maintenance

10.1 Cleaning of the washbasin and Dock-in

It is important that the washbasin is cleaned according to these guidelines.

Clean the washbasin with a wrung cloth with lukewarm water and a mild detergent. Do not use abrasives or grinding cloths, brushes or sponges.

Ropox Swing washbasin is made of a composite material of marble and plastic granulate with a gel coat surface. This gives a hard and very hardwearing finish, which is easy to clean. Wash the surfaces daily with water and dry with a cloth. Do not use detergents containing hard abrasives – e.g. steel wool, scouring powder or sulphuric acid.

If the water has high calcium content, calcareous deposits will often occur. These deposits should be removed at least once a week by using a detergent containing citric acid, acetic acid or phosphoric acid. Leave the detergent to work for 5 to 10 minutes depending on the thickness of the deposits and clean thoroughly with a soft scouring sponge.

Disinfection of the basin may be done with household spirits.

10.2 Repair of washbasin

Minor damage or limited discolorations of the surfaces of the washbasin itself may easily be repaired by means of a special repair kit. Please contact Ropox for further details.

10.3 Maintenance



Inspections, service and repairs must be carried out by competent personnel.

The washbasin is maintenance-free and the moving parts have been lubricated for life. For reasons of safety and reliability we recommend inspection of the washbasin once a year:

- Check that all bolts have been securely tightened.
- Check that the washbasin rotates freely and that the arm swings properly

After each inspection, fill in the service schedule.

Only use Ropox original spare parts for replacement of parts. If other spare parts are used, the right to complain may become void.

10.4 Service schedule, operation and maintenance

Service and maintenance	Serial No
Date:	
Signature:	
Remarks:	

Service and maintenance	Serial No
Date:	
Signature:	
Remarks:	

Service and maintenance	Serial No
Date:	
Signature:	
Remarks:	

Service and maintenance	Serial No
Date:	
Signature:	
Remarks:	

Service and maintenance	Serial No
Date:	
Signature:	
Remarks:	

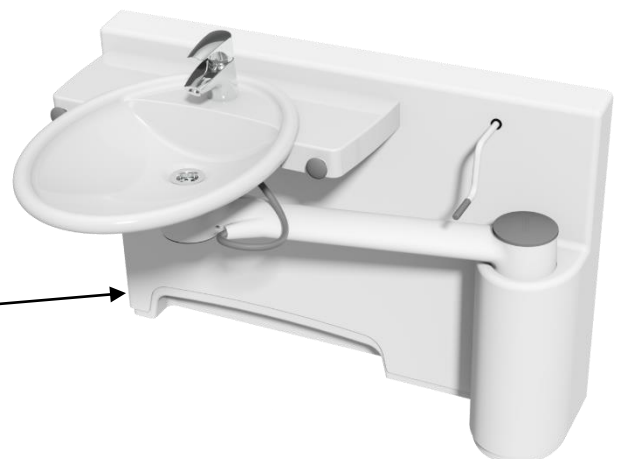
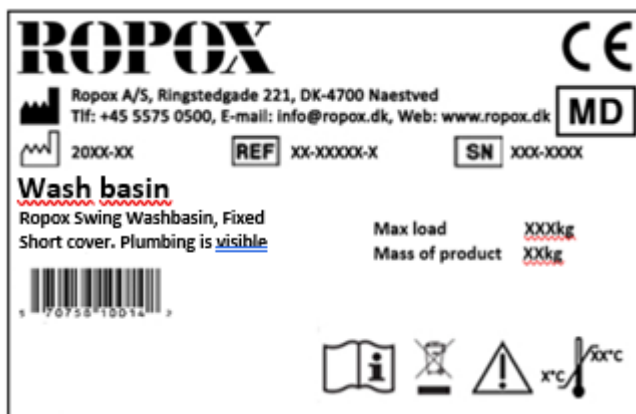
Service and maintenance	Serial No
Date:	
Signature:	
Remarks:	

Service and maintenance	Serial No
Date:	
Signature:	
Remarks:	

Service and maintenance	Serial No
Date:	
Signature:	
Remarks:	

11. Labels

Every Swing Washbasin has its own label as shown below. This label contains important information, which must be quoted when contacting the supplier.



	<p>This product is CE-marked in accordance with:</p> <p>European Medical Device Directive 93/42/EEC, including amendments incorporated in Directive 2007/47/EEC.</p> <p>European Medical Device Regulation (EU)2017/745</p> <p>Council Directive 2011/65/EU, RoHS</p>
	Manufacturer name and address
	Date of production
	Stock number
	Serial number
	Consult manual before use
	Consult manual for important safety related information, warnings and safety precautions.
	Do not dispose as unsorted municipal waste. Product must be returned to a designated recycling station.
	Operating temperatures may not exceed 5-45C°

12. Complaints

See General Terms of Sale and Delivery on www.ropox.com



Ringstedgade 221
DK – 4700 Naestved
Tel.: +45 55 75 05 00 Fax.: +45 55 75 05 50
E-mail: info@ropox.dk
www.ropox.com